

Receptacles

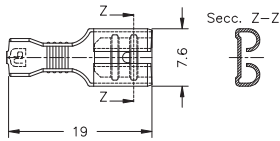
6,3 (.250) Type series terminals



Standard terminals



Figure	Wire size mm ² (AWG)	Ø Insulation (mm)	Tab thickness (mm)	Part number	Brass	Brass Pre-Sn	Brass Sn	Bronze	Bronze Pre-Sn	Bronze Sn	Steel Ni	Material thickness (mm)	Parts x reel	
					00	01	02	30	31	32	24			
	0,5-1 (20-18)	1,8-2,5	6,3x0,8	4420.*	•		•	•		•	•	0,4	8.000	
	1-2,5 (18-14)	3-4,3		4422.*	•		•	•		•	•			7.000
	2,5-6 (14-10)	3,8-5		4425.*	•		•	•		•	•			

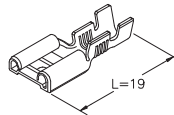


Special part number for FLR wire

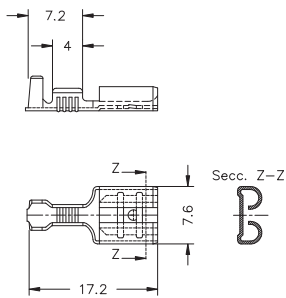
0,5-1 (20-18)	1,5-2,1 FLR	6,3x0,8	4424.	•		•	•		•	•	0,4	8.000
------------------	-------------	---------	-------	---	--	---	---	--	---	---	-----	-------

UL See page 12

*DIN 46247

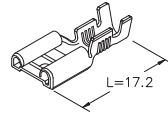


Short version

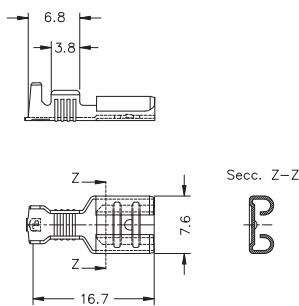


0,5-1 (20-18)	1,8-2,5	6,3x0,8	4540.	•		•	•		•	•	0,4	8.000	
1-2,5 (18-14)	3-4,3		4542.	•		•	•		•	•			6.000
2-5 (14-10)	3,8-5		4544.	•		•	•		•	•			

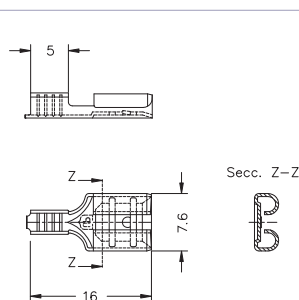
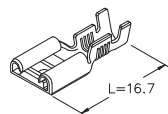
UL See page 12



Economical version



1-2,5 (18-14)	3-4,3	6,3x0,8	4648.	•		•	•		•	•	0,4	8.000
------------------	-------	---------	-------	---	--	---	---	--	---	---	-----	-------



0,5-1,5 (20-16)		6,3x0,8	4646.	•		•	•		•	•	0,4	8.000
--------------------	--	---------	-------	---	--	---	---	--	---	---	-----	-------



Receptacles

6,3 (.250) Type series terminals



Unlockable



Figure	Wire size mm ² (AWG)	Ø Insulation (mm)	Tab thickness (mm)	Part number	Brass	Brass Pre-Sn	Brass Sn	Bronze	Bronze Pre-Sn	Bronze Sn	Steel Ni	Material thickness (mm)	Parts x reel
					00	01	02	30	31	32	24		
	0,5-1 (20-18)	1,8-2,5	6,3x0,8	4520.	•		•	•		•		0,4	8.000
	1-2,5 (18-14)	3-4,3		4521.	•		•	•		•			7.000



Overmoulding receptacle



Figure	Wire size mm ² (AWG)	Ø Insulation (mm)	Tab thickness (mm)	Part number	Brass	Brass Pre-Sn	Brass Sn	Bronze	Bronze Pre-Sn	Bronze Sn	Steel Ni	Material thickness (mm)	Parts x reel
					00	01	02	30	31	32	24		
	0,5-1 (20-18)	1,8-2,5	6,3x0,8	4548.	•		•					0,4	8.000



Low insertion based on standard design



Figure	Wire size mm ² (AWG)	Ø Insulation (mm)	Tab thickness (mm)	Part number	Brass	Brass Pre-Sn	Brass Sn	Bronze	Bronze Pre-Sn	Bronze Sn	Steel Ni	Material thickness (mm)	Parts x reel
					00	01	02	30	31	32	24		
	0,5-1 (20-18)	1,8-2,5	6,3x0,8	4820.	•		•	•		•		0,4	8.000
	1-2,5 (18-14)	3-4,3		4822.	•		•	•		•			7.000
	2,5-6 (14-10)	3,8-5		4824.	•		•	•		•			5.000

Short version

Figure	Wire size mm ² (AWG)	Ø Insulation (mm)	Tab thickness (mm)	Part number	Brass	Brass Pre-Sn	Brass Sn	Bronze	Bronze Pre-Sn	Bronze Sn	Steel Ni	Material thickness (mm)	Parts x reel
					00	01	02	30	31	32	24		
	0,5-1 (20-18)	1,8-2,5	6,3x0,8	4840.	•		•	•		•		0,4	8.000
	1-2,5 (18-14)	3-4,3		4842.	•		•	•		•			8.000
	2-5 (14-10)	3,8-5		4844.	•		•	•		•			6.000

Receptacles

6,3 (.250) Type series terminals



Receptacle housings

Figure	Part number	Polyethylene	PA66 V2	PA66 V0	NO FLAME	Colour	Num. of ways
	2631010		•			Natural	1
	2631015		•			Black	
	2631030			•		Natural	
	2631035			•		Black	
See page 13							
	2632100*	•				Natural	1
	2632110*		•				
	2632000**	•					
	2632010**		•				
*1 wire **2 wires							
	2631110		•			Natural	1
	2631310		•			Natural	1
	2631315		•			Black	
See page 13							
	2631600	•				Natural	1
	2631610		•			Black	
	2631615		•			Black	
	2631630			•		Natural	
	2631635			•		Black	



Standard self-locking terminals

Figure	Wire size mm ² (AWG)	Ø Insulation (mm)	Tab thickness (mm)	Part number	00 Brass	01 Brass Pre-Sn	02 Brass Sn	30 Bronze	31 Bronze Pre-Sn	32 Bronze Sn	24 Steel Ni	Material thickness (mm)	Parts x reel
	0,5-1 (20-18)	1,8-2,5	6,3x0,8	4730.	•		•	•		•	•	0,4	8.000
	1-2,5 (18-14)	3-4,3		4732.	•		•	•		•	•		7.000
	2,5-5 (14-10)	3,6-5		4734.	•		•	•		•	•		6.000
See page 12													



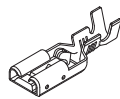
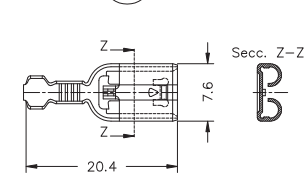
Receptacles

6,3 (.250) Type series terminals



Figure	Wire size mm ² (AWG)	Ø Insulation (mm)	Tab thickness (mm)	Part number	Brass	Brass Pre-Sn	Brass Sn	Bronze	Bronze Pre-Sn	Bronze Sn	Steel Ni	Material thickness (mm)	Parts x reel
					00	01	02	30	31	32	24		
Connector disconnection													
	0,5-1 (20-18)	1,8-2,5	6,3x0,8	4720.	•		•	•		•	•	0,4	8.000
	1-2,5 (18-14)	3-4,3		4722.	•		•	•		•	•		7.000
	2,5-5 (14-10)	3,6-5		4724.	•		•	•		•	•		6.000

UL See page 12



Receptacle housings

Figure	Part number	Polyethylene				Colour	Num. of ways
		PA66 V2	PA66 V0	NO FLAME			
	2631210*	•			Natural	1	

UL See page 13

	2638810*	•			Natural	6
--	----------	---	--	--	---------	---

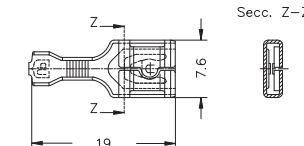
*Only for terminal 4720 / 4722 / 4724



Low insertion

Figure	Wire size mm ² (AWG)	Ø Insulation (mm)	Tab thickness (mm)	Part number	Brass	Brass Pre-Sn	Brass Sn	Bronze	Bronze Pre-Sn	Bronze Sn	Steel Ni	Material thickness (mm)	Parts x reel
					00	01	02	30	31	32	24		
	0,2-0,6 (24-20)	1,4-2,1	6,3x0,8	4833.	•	•	•	•	•	•	•	0,4	8.000
	0,5-1 (20-18)	1,8-2,5		4830.	•	•	•	•	•	•	•		
	0,5-1,5 (20-16)	2-3,3		4831.	•	•	•	•	•	•	•		
	1-2,5 (18-14)	3-4,3		4832.	•	•	•	•	•	•	•		7.000
	2,5-4 (14-12)	3,6-5		4834.	•	•	•	•	•	•	6.000		

UL See page 12



Receptacles

6,3 (.250) Type series terminals



Receptacle housings

Figure	Part number	Polyethylene	PA66 V2	PA66 V0	NO FLAME	Colour	Num.of ways
	2631410	•				Natural	1



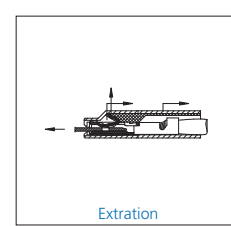
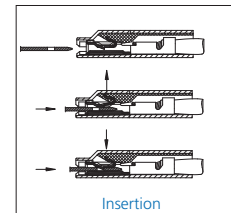
Self-locking terminal under TP design

Figure	Wire size mm ² (AWG)	Ø Insulation (mm)	Tab thickness (mm)	Part number	Brass	Brass Pre-Sn	Brass Sn	Bronze	Bronze Pre-Sn	Bronze Sn	Steel Ni	Material thickness (mm)	Parts x reel
					00	01	02	30	31	32	24		
	0,5-1 (20-18)	1,8-2,5	6,3x0,8	4920.	•	•		•	•			0,4	8.000
	0,5-1,5 (20-16)	2-3,3		4921.	•	•		•	•				
	1-2,5 (18-14)	3-4,3		4922.	•	•		•	•				
	2,5-5 (14-10)	3,6-5		4924.	•	•		•	•				



Receptacle housings

Figure	Part number	Polyethylene	PA66 V2	PA66 V0	NO FLAME	Colour	Num.of ways
	2631910	•				Natural	1
	P549510	•				Natural	5



Self-locking terminal under TP design

Figure	Wire size mm ² (AWG)	Ø Insulation (mm)	Tab thickness (mm)	Part number	Brass	Brass Pre-Sn	Brass Sn	Bronze	Bronze Pre-Sn	Bronze Sn	Steel Ni	Material thickness (mm)	Parts x reel
					00	01	02	30	31	32	24		
	0,2-0,6 (24-20)	1,4-2,1	6,3x0,8	4933.	•	•		•	•		•	0,4	8.000
	0,5-1 (20-18)	1,8-2,5		4930.	•	•		•	•		•		
	0,5-1,5 (20-16)	2-3,3		4931.	•	•		•	•		•		
	1-2,5 (18-14)	3-4,3		4932.	•	•		•	•		•		
	2,5-4 (14-12)	3,6-5		4934.	•	•		•	•		•		



Receptacles for connector

6,3 (.250) Type series terminals



Standard terminals



Figure	Wire size mm ² (AWG)	Ø Insulation (mm)	Tab thickness (mm)	Part number	Brass	Brass Pre-Sn	Brass Sn	Bronze	Bronze Pre-Sn	Bronze Sn	Steel Ni	Material thickness (mm)	Parts x reel	
					00	01	02	30	31	32	24			
With bottom dimple														
	0,5-1 (20-18)	1,5-2,1 FLR	6,3x0,8	4321.	•		•	•		•		0,4	8.000	
		1,8-2,5		4323.*	•		•	•		•				
	1-2,5 (18-14)	1,8-2,9 FLR		4325.	•		•	•		•				7.000
		3-4,3		4327.*	•		•	•		•				
	2,5-6 (14-10)	3,8-5		4346.*	•		•	•		•				4.000
See page 12														
Without bottom dimple														
	0,5-1 (20-18)	1,5-2,1 FLR	6,3x0,8	4331.	•		•	•		•		0,4	8.000	
		1,8-2,5		4333.*	•		•	•		•				
		1,8-3,3		4332E	•		•	•		•				0,35
	1-2,5 (18-14)	1,8-2,9 FLR		4335.	•		•	•		•		0,4	7.000	
		3-4,3		4336E	•		•	•		•		0,35		
	2,5-6 (14-10)	3,8-5		4337.	•		•	•		•		0,4	4.000	
				4348.*	•		•	•		•				
See page 12														
SEAL insulation														
	1,5-2,5 (16-14)	SEAL	6,3x0,8	4330.	•		•	•		•		0,4	3.000	

Receptacles for connector

6,3 (.250) Type series terminals



Receptacle connectors

Figure	Part number	Polyethylene	PA66 V2	PA66 V0	NO FLAME	Colour	Num. of ways
	2635110	•				Natural	1
	2635210	•				Natural	2
	2637410	•				Natural	2
	2637510	•				Natural	2
	2637810	•				Natural	2
	2635310	•				Natural	3
	2635410	•				Natural	4
	P543410	•				Natural	4
	P543430		•				
	P543440			•			

Receptacles for connector

6,3 (.250) Type series terminals



Receptacle connectors

Figure	Part number	ABS	PAG6 V2	PAG6 V0	NO FLAME	Colour	Num. of ways
	2635610		•			Natural	6
	2638610		•			Natural	6
	2639728	•				Grey	6 (3x2)
	2635810		•			Natural	8
	2639010		•			Natural	10 (5x2)
	2638010		•			Natural	11
	2638710		•			Natural	12

Receptacles for connector

6,3 (.250) Type series terminals



Low insertion



Figure	Wire size mm ² (AWG)	Ø Insulation (mm)	Tab thickness (mm)	Part number	Brass	Brass Pre-Sn	Brass Sn	Bronze	Bronze Pre-Sn	Bronze Sn	Steel Ni	Material thickness (mm)	Parts x reel	
					00	01	02	30	31	32	24			
<p>With upper dimple</p>	0,2-0,6 (24-20)	1,4-2,1	6,3x0,8	4120F	•	•	•	•	•	•	•	0,4	8.000	
	0,5-1 (20-18)	1,8-2,5		4120.	•	•	•	•	•	•	•			•
	0,5-1,5 (20-16)	2-3,3		4120E	•	•	•	•	•	•	•		•	7.000
	1-2,5 (18-14)	3-4,3		4122.	•	•	•	•	•	•	•		•	
	2,5-5 (14-10)	3,6-5		4124.	•	•	•	•	•	•	•		•	6.000
	See page 12													

Figure	Wire size mm ² (AWG)	Ø Insulation (mm)	Tab thickness (mm)	Part number	Brass	Brass Pre-Sn	Brass Sn	Bronze	Bronze Pre-Sn	Bronze Sn	Steel Ni	Material thickness (mm)	Parts x reel	
					00	01	02	30	31	32	24			
<p>Without upper dimple</p>	0,2-0,6 (24-20)	1,4-2,1	6,3x0,8	4121F	•	•	•	•	•	•	•	0,4	8.000	
	0,5-1 (20-18)	1,8-2,5		4121.	•	•	•	•	•	•	•			•
	0,5-1,5 (20-16)	2-3,3		4121E	•	•	•	•	•	•	•		•	7.000
	1-2,5 (18-14)	3-4,3		4123.	•	•	•	•	•	•	•		•	
	2,5-5 (14-10)	3,6-5		4125.	•	•	•	•	•	•	•		•	6.000
	See page 12													



Special housings

Figure	Part number	PPS	PA66 V2	PA66 V0	NO FLAME	Colour	Num. of ways
		•	•	•	•		
	P841310	•	•	•	•	Natural	3
	P841395	•	•	•	•	Black	
	P841410	•	•	•	•	Natural	4
	P841495	•	•	•	•	Black	
	P841510	•	•	•	•	Natural	5
	P841595	•	•	•	•	Black	

Receptacles for connector

6,3 (.250) Type series terminals

Rast5 connectors

Figure	Part number	PPNF	PA66 V2	PA66 V0	NO FLAME	Colour	Num. of ways
	R541210-k		•			Natural	2
	R541230-k			•			
	R541240-k				•		
	R541270-k	•					
	R541310-k		•			Natural	3
	R541330-k			•			
	R541340-k				•		
	R541370-k	•					
	R541410-k		•			Natural	4
	R541430-k			•			
	R541440-k				•		
	R541470-k	•					
	R541510-k		•			Natural	5
	R541530-k			•			
	R541540-k				•		
	R541570-k	•					
	R541610-k		•			Natural	6
	R541630-k			•			
	R541640-k				•		
	R541670-k	•					
	R541710-k		•			Natural	7
	R541730-k			•			
	R541740-k				•		
	R541770-k	•					
	R541810-k		•			Natural	8
	R541830-k			•			
	R541840-k				•		
	R541870-k	•					
	Panel						
	R531530-k			•		Natural	5
	R531532-k			•		Yellow	
	R531533-k			•		Red	
	R531534-k			•		Green	



Standard terminals

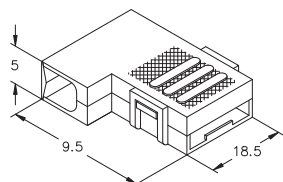


Figure	Wire size mm ² (AWG)	Ø Insulation (mm)	Tab thickness (mm)	Part number	Brass	Brass Pre-Sn	Brass Sn	Bronze	Bronze Pre-Sn	Bronze Sn	Steel Ni	Material thickness (mm)	Parts x reel
					00	01	02	30	31	32	24		
 	0,3-0,75 (22-18)		6,3x0,8	5428.	•		•	•		•		0,4	5.000
	 	0,5-1 (20-18)	1,8-2,5	6,3x0,8	5420.*	•		•	•		•		0,4
1-2,5 (18-14)		3-4,3	5422.*		•		•	•		•		4.000	
See page 12													
 	0,5-1,5 (20-16)	1,9-3,3	6,3x0,8	5424.*	•		•	•		•		0,4	3.000
	1-2,5 (18-14)	2,7-3,8		5426.*	•		•	•		•		0,45	
*DIN 46346													
 	0,5-1,5 (20-18)	1,9-3,3	6,3x0,8	5429.	•		•	•		•	•	0,4	3.500
	1-2,5 (18-14)	2,7-3,8		5430.	•		•	•		•	•		3.000
 	0,5-1,5 (20-18)	1,9-3,3	6,3x0,8	5429.	•		•	•		•	•	0,4	3.500
	1-2,5 (18-14)	2,7-3,8		5430.	•		•	•		•	•		3.000

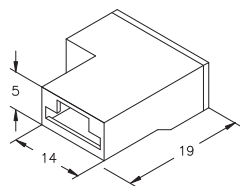


Receptacle housings

Figure



Part number	Polyethylene	PA66 V2	PA66 V0	NO FLAME	Colour	Num. of ways
2633010*		•			Natural	1



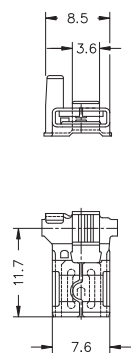
2633110*		•			Natural	1
12.8810*		•				
2633210**		•				

*For terminals 5420-5422
** For terminals 5424-5426



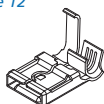
Low insertion

Figure



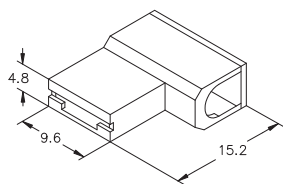
Wire size mm ² (AWG)	Ø Insulation (mm)	Tab thickness (mm)	Part number	00	01	02	30	31	32	24	Material thickness (mm)	Parts x reel
0,2-0,6 (24-20)	2,1 Máx	6,3x0,8	5820F	•	•		•	•		•	0,4	4.000
0,5-1,5 (20-16)	1,9-3,3		5820.	•	•		•	•		•		3.500
1-2,5 (18-14)	2,7-3,8		5822.	•	•		•	•		•		3.000

UL See page 12



Flag housings

Figure

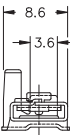

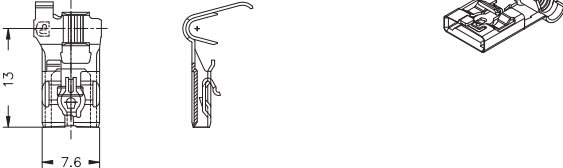


Part number	Polyethylene	PA66 V2	PA66 V0	NO FLAME	Colour	Num. of ways
2633310		•			Natural	1



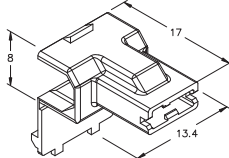
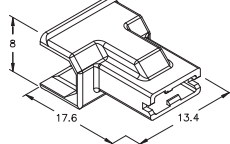
Self-locking terminal under TP design



Figure	Wire size mm ² (AWG)	Ø Insulation (mm)	Tab thickness (mm)	Part number	00	01	02	30	31	32	51	Material thickness (mm)	Parts x reel
					Brass	Brass Pre-Sn	Brass Sn	Bronze	Bronze Pre-Sn	Bronze Sn	Cu Alloy Pre-Sn		
	0,5-1,5 (20-16)	1,9-3,3	6,3x0,8	5725.	•	•		•	•		•	0,4	3.500
	1,5-3 (20-12)	2,7-3,8		5726.	•	•		•	•		•		3.000
 See page 12													
													

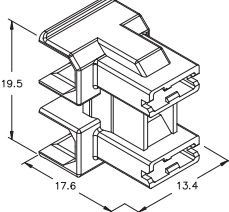
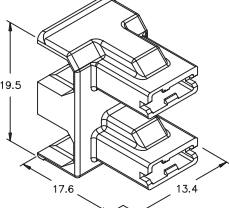


Flag housings

Figure	Part number	PBT 20GF	PA66 V2	PA66 V0	NO FLAME	Colour	Num. of ways
	2633910		•			Natural	1
	2633435	•				Black	1



Flag connectors

Figure	Part number	PBT 20GF	PA66 V2	PA66 V0	NO FLAME	Colour	Num. of ways
	2633535	•				Black	2
	2633815		•			Black	2

Flags

6,3 (.250) Type series terminals



Self-locking terminal under TP design



Figure	Wire size mm ² (AWG)	Ø Insulation (mm)	Tab thickness (mm)	Part number	Brass	Brass Pre-Sn	Brass Sn	Bronze	Bronze Pre-Sn	Bronze Sn	Steel Ni	Material thickness (mm)	Parts x reel
					00	01	02	30	31	32	24		
	0,2-0,6 (24-20)	2,1 Máx	6,3x0,8	5720F	•	•		•	•		•	0,4	4.000
	0,5-1,5 (20-16)	1,9-3,3		5720.	•	•		•	•		•		3.500
	1-2,5 (18-14)	2,7-3,8		5722.	•	•		•	•		•		3.000

See page 12

Flags for connector



Standard terminals



Figure	Wire size mm ² (AWG)	Ø Insulation (mm)	Tab thickness (mm)	Part number	Brass	Brass Pre-Sn	Brass Sn	Bronze	Bronze Pre-Sn	Bronze Sn	Steel Ni	Material thickness (mm)	Parts x reel
					00	01	02	30	31	32	24		
	0,5-1,5 (20-16)	1,9-3,3	6,3x0,8	5324.	•		•	•		•		0,4	3.000
	1-2,5 (18-14)	2,7-3,8		5326.	•		•	•		•			2.000
	0,5-1,5 (20-16)	1,9-3,3	6,3x0,8	5329.	•		•	•		•		0,4	3.500
	1-2,5 (18-14)	2,7-3,8		5330.	•		•	•		•			3.000

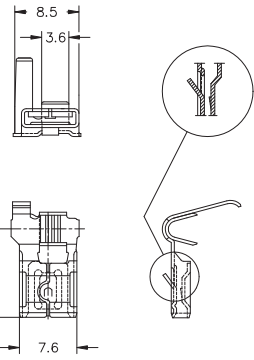
Flags for connector


6,3 (.250) Type series terminals



Low insertion



Figure	Wire size mm ² (AWG)	Ø Insulation (mm)	Tab thickness (mm)	Part number	Brass	Brass Pre-Sn	Brass Sn	Bronze	Bronze Pre-Sn	Bronze Sn	Steel Ni	Material thickness (mm)	Parts x reel
					00	01	02	30	31	32	24		
	With upper dimple												
	0,2-0,6 (24-20)	2,1 Máx	6,3x0,8	5332F	•	•		•	•		•	0,4	4.000
	0,5-1,5 (20-16)	1,9-3,3		5332.	•	•		•	•		•		3.500
1-2,5 (18-14)	2,7-3,8	5334.		•	•		•	•		•	3.000		

 See page 12

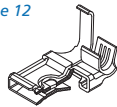
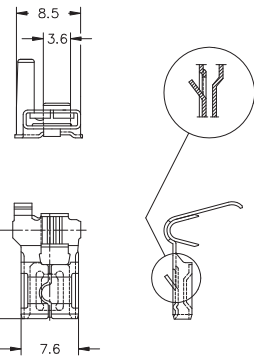
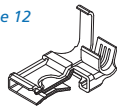



Figure	Wire size mm ² (AWG)	Ø Insulation (mm)	Tab thickness (mm)	Part number	Brass	Brass Pre-Sn	Brass Sn	Bronze	Bronze Pre-Sn	Bronze Sn	Steel Ni	Material thickness (mm)	Parts x reel
					00	01	02	30	31	32	24		
	Without upper dimple												
	0,2-0,6 (24-20)	2,1 Máx	6,3x0,8	5333F	•	•		•	•		•	0,4	4.000
	0,5-1,5 (20-16)	1,9-3,3		5333.	•	•		•	•		•		3.500
1-2,5 (18-14)	2,7-3,8	5335.		•	•		•	•		•	3.000		

 See page 12



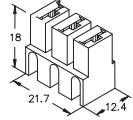
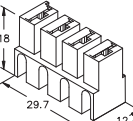
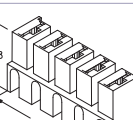
Flag housings

Figure	Part number	Polyethylene				Colour	Num. of ways
		PA66 V2	PA66 V0	NO FLAME			
	2633710	•				Natural	1
	2633730		•				

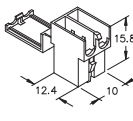
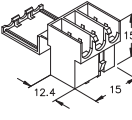
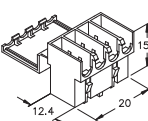
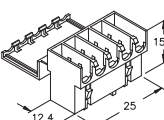
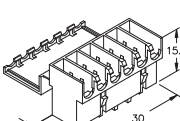
Flags for connector

6,3 (.250) Type series terminals

Centerline 8 mm flag connectors

Figure	Part number	Polyethylene	PA66 V2	PA66 V0	NO FLAME	Colour	Num. of ways
	P853310		•			Natural	3
	P853315		•			Black	
	P853410		•			Natural	4
	P853415		•			Black	
	P853510		•			Natural	5
	P853515		•			Black	

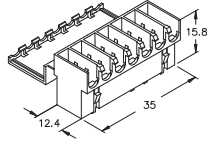
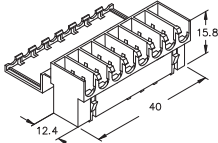
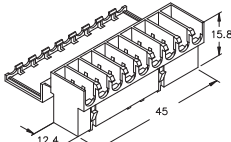
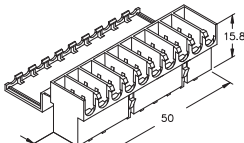
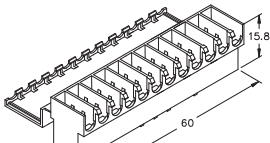
Rast5 connectors

Figure	Part number	PPNF	PA66 V2	PA66 V0	NO FLAME	Colour	Num. of ways
	R553210-k		•			Natural	2
	R553230-k			•			
	R553240-k				•		
	R553270-k	•					
	R553310-k		•			Natural	3
	R553330-k			•			
	R553340-k				•		
	R553370-k	•					
	R553410-k		•			Natural	4
	R553430-k			•			
	R553440-k				•		
	R553470-k	•					
	R553510-k		•			Natural	5
	R553530-k			•			
	R553540-k				•		
	R553570-k	•					
	R553610-k		•			Natural	6
	R553630-k			•			
	R553640-k				•		
	R553670-k	•					

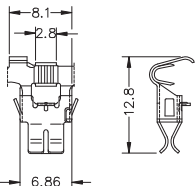
6,3 (.250) Type series terminals

Flags for connector

Rast5 connectors

Figure	Part number	PPNF	PA66 V2	PA66 V0	NO FLAME	Colour	Num. of ways
	R553710-k		•			Natural	7
	R553730-k			•			
	R553740-k				•		
	R553770-k	•					
	R553810-k		•			Natural	8
	R553830-k			•			
	R553840-k				•		
	R553870-k	•					
	R553910-k		•			Natural	9
	R553930-k			•			
	R553940-k				•		
	R553970-k	•					
	R5531010-k		•			Natural	10
	R5531030-k			•			
	R5531040-k				•		
	R5531070-k	•					
	R5531210-k		•			Natural	12
	R5531230-k			•			
	R5531240-k				•		
	R5531270-k	•					

H15 Lampholder flag terminals

Figure	Wire size mm ² (AWG)	Ø Insulation (mm)	Tab thickness (mm)	Part number	Brass	Brass Pre-Sn	Brass Sn	Bronze	Bronze Pre-Sn	Bronze Sn	CU. Alloy Pre Sn	Material thickness (mm)	Parts x reel
					00	01	02	30	31	32	51		
	0,5-1 (20-18)	2,5 Máx		8430.							•	0,32	3.000

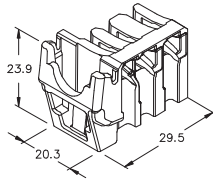


H15 Lampholder flag terminals

6,3 (.250) Type series terminals

Lampholder connector

Figure



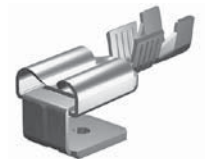
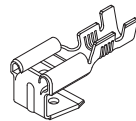
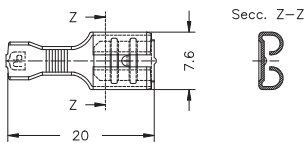
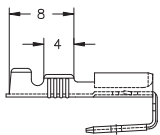
Part number	PBT-GF20	PA66 V2	PA66 V0	NO FLAME	Colour	Num. of ways
2483295	•				Black	3

Receptacle - tab terminals



Standard terminals

Figure



Wire size mm ² (AWG)	Ø Insulation (mm)	Tab thickness (mm)	Part number	Brass	Brass Pre-Sn	Brass Sn	Bronze	Bronze Pre-Sn	Bronze Sn	Steel Ni	Material thickness (mm)	Parts x reel
				00	01	02	30	31	32	24		
0,5-1 (20-18)	1,8-2,5	6,3x0,8	5220.	•		•	•		•		0,4	1.500
			5220T	•		•	•		•			
5222.	•			•	•		•		•			
5222T	•			•	•		•		•			
0,75-1,5 (18-16)	2,4-3,3											

Receptacle - tab terminals

6,3 (.250) Type series terminals



Low insertion



Figure	Wire size mm ² (AWG)	Ø Insulation (mm)	Tab thickness (mm)	Part number	Brass	Brass Pre-Sn	Brass Sn	Bronze	Bronze Pre-Sn	Bronze Sn	Steel Ni	Material thickness (mm)	Parts x reel
					00	01	02	30	31	32	24		
	0,5-1 (20-18)	1,8-3,3	6,3x0,8	5230.	•	•		•	•		•	0,4	1.500
	1-2,5 (18-14)	2,7-4,3		5232.	•	•		•	•		•		
	0,5-1 (20-18)	1,8-3,3	6,3x0,8	5231.	•	•		•	•		•	0,4	1.500
	1-2,5 (18-14)	2,7-4,3		5233.	•	•		•	•		•		
	0,5-1 (20-18)	1,8-3,3	6,3x0,8	5234.	•	•		•	•		•	0,4	2.750
	1-2,5 (18-14)	2,7-4,3		5236.	•	•		•	•		•		



Figure	Wire size mm ² (AWG)	Ø Insulation (mm)	Tab thickness (mm)	Part number	Brass	Brass Pre-Sn	Brass Sn	Bronze	Bronze Pre-Sn	Bronze Sn	Steel Ni	Material thickness (mm)	Parts x reel
					00	01	02	30	31	32	24		
	0,75-1,5 (18-16)	2,4-3,3	6,3x0,8	6420.	•		•					0,8	7.000
	1-2,5 (18-14)	3-4,3	6,3x0,8	6422.* *DIN 46248	•	•	•	•	•			0,4	7.000
	1-2,5 (18-14)	3-4,3	6,3x0,4	6433.	•	•						0,4	5.000

Housings

Figure	Part number	Polyethylene	Colour	Num. of ways
		PA66 V2		
	2630110	•	Natural	1

Tabs for connector



Figure	Wire size mm ² (AWG)	Ø Insulation (mm)	Tab thickness (mm)	Part number	Brass	Brass Pre-Sn	Brass Sn	Bronze	Bronze Pre-Sn	Bronze Sn	Steel Ni	Material thickness (mm)	Parts x reel
					00	01	02	30	31	32	24		
	0,2-0,6 (24-20)	1,4-2,1	6,3x0,8	6423.*	•	•		•	•			0,4	5.000
	0,5-1 (20-18)	1,5-2,1 FLR		6421.*	•	•		•	•				6.000
		1,8-2,5		6424.*	•	•		•	•				5.000
	1-2,5 (18-14)	3-4,3		6432.*	•	•		•	•				
	0,2-0,6 (24-20)	1,4-2,1	6,3x0,8	6425.*	•	•		•	•			0,4	6.000
	0,5-1 (20-18)	1,5-2,1 FLR		6427.*	•	•		•	•				5.000
		1,8-2,5		6426.*	•	•		•	•				
	1-2,5 (18-14)	3-4,3		6434.*	•	•		•	•				
	1-2,5 (18-14)	3-4,3	6,3x0,4	6430.	•	•						0,4	5.000
	2,5-6 (14-10)	3,8-6	6,3x0,8	6438.*	•	•		•	•			0,4	3.500
	2,5-6 (14-10)	3,8-6	6,3x0,8	6440.*	•	•		•	•			0,4	3.500

Connectors

Figure	Part number	ABS	PA66 V2	PA66 V0	NO FLAME	Colour	Num. of ways
	2634110	•				Natural	1
	2634210	•				Natural	2
	2637310	•				Natural	2
	2637610	•				Natural	2
	2637710	•				Natural	2
	2637715	•				Black	
	2634310	•				Natural	3
	2634410	•				Natural	4
	2634610	•				Natural	6

Connectors

Figure	Part number	ABS	PA66 V2	PA66 V0	NO FLAME	Colour	Num. of ways
	2638210	•				Natural	6
	2634810	•				Natural	8
	2638310	•				Natural	8
	2637910	•				Natural	11
	2639628	•				Grey	6 (3x2)

Rast5 connectors

Figure	Part number	PPNF	PA66 V2	PA66 V0	NO FLAME	Colour	Num. of ways
Panel							
	R574330-k			•		Natural	3
	R574336-k			•		Blue	
	R574530-k			•		Natural	5
	R574532-K			•		Yellow	
	R574533-k			•		Red	
	R574534-k			•		Green	
Aerial connection							
	R575530-k			•		Natural	5
	R575532-k			•		Yellow	
	R575533-k			•		Red	
	R575534-k			•		Green	

Tabs for connector

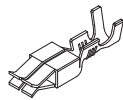
Figure	Part number	PPNF	PA66 V2	PA66 V0	NO FLAME	Colour	Num. of ways
	R564210-k		•			Natural	2
	R564230-k			•			
	R564240-k				•		
	R564270-k	•					
	R564310-k		•			Natural	3
	R564330-k			•			
	R564340-k				•		
	R564370-k	•					
	R564510-k		•			Natural	5
	R564530-k			•			
	R564540-k				•		
	R564570-k	•					
	R564610-k		•			Natural	6
	R564630-k			•			
	R564640-k				•		
	R564670-k	•					

PCB connectors

Figure	Part number	PA6 GF 30NF	PA66 V2	PA66 V0	NO FLAME	Colour	Num. of ways
	R569240-k	•				Natural	2
	R569340-k	•				Natural	3
	R569440-k	•				Natural	4
	R569540-k	•				Natural	5
	R569640-k	•				Natural	6
	R569740-k	•				Natural	7



Figure	Wire size mm ² (AWG)	Ø Insulation (mm)	Tab thickness (mm)	Part number	Brass	Brass Pre-Sn	Brass Sn	Bronze	Bronze Pre-Sn	Bronze Sn	Steel Ni	Material thickness (mm)	Parts x reel		
					00	01	02	30	31	32	24				
	0,2-0,6 (24-20)	1,4-2,1		8435.	•	•		•	•			0,32	3.500		
	0,5-1,5 (20-16)	1,8-3,3		8441.	•	•		•	•						
	0,5-1 (20-18)	1,5-2,1 FLR		8441F	•	•		•	•					0,4	
	0,5-1 (20-18)	1,5-2,1 FLR		8437.	•	•		•	•					0,32	
	0,75-1,5 (18-16)	1,8-2,3 FLR		8437F	•	•		•	•			0,4			
	1-2,5 (18-14)	3-4,3		8442.	•	•		•	•			0,32	2.700		
	2-3 (14-12)			8445.	•	•		•	•				2.500		
	2-3 (14-12)			8449.	•	•		•	•						

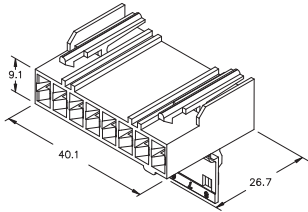


Connectors

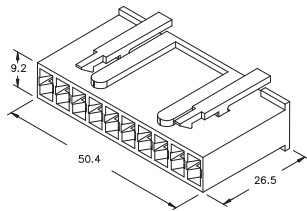
Figure	Part number	Polyethylene	PA66 V2	PA66 V0	NO FLAME	Colour	Num. of ways
	2636310		•				3
	2636330			•		Natural	
	2636340				•	Black	
	2636345				•	Black	
	2636210		•				6
	2636230			•		Natural	
	2636240				•	Black	
	2636245				•	Black	
	2636810		•			Natural	8
	2639810		•			Natural	8



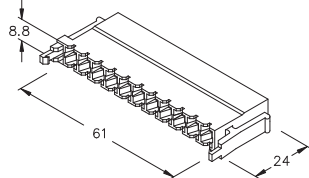
Figure



Part number	Polyethylene	PA66 V2	PA66 V0	NO FLAME	Colour	Num. of ways
2636010	•					8
2636030		•			Natural	
2636040			•		Black	
2636045			•		Black	



2636110	•				Natural	10
2636130		•				
2636140			•			
2636145			•			

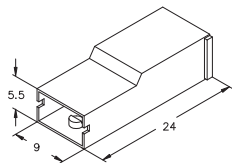


2638510	•				Natural	12
2638511	•				White	

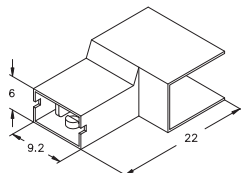
Other Connectors

Electrical household appliance connectors

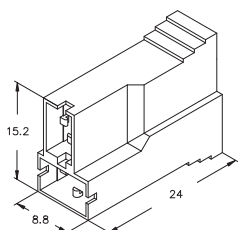
Figure



Part number	Polyethylene	PA66 V2	PA66 V0	NO FLAME	Colour	Num. of ways
2637010	•				Natural	1



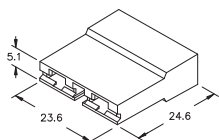
2637115	•				Black	1
---------	---	--	--	--	-------	---



2637210	•				Natural	2
---------	---	--	--	--	---------	---

Electrical household appliance connectors

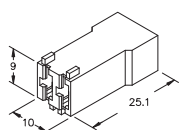
Figure



Part number	Polyethylene				Colour	Num. of ways
	PA66 V2	PA66 V0	NO FLAME			

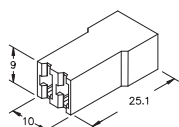
2624110	•				Natural	2
2624130		•				
2624140			•			
2624145			•	Black		

UP STA **UP SEK** Receptacles 6,3
Water valve connectors



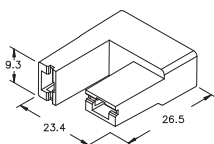
2624310	•				Natural	2
2624330		•				
2624340			•			
2624345			•	Black		

UP STA **UP SEK** Receptacles 6,3
Heater-pcb connection



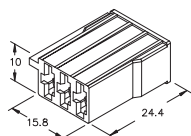
2624410	•				Natural	2
2624430		•				
2624440			•			
2624445			•	Black		

UP STA **UP SEK** Receptacles 6,3
Heater connector



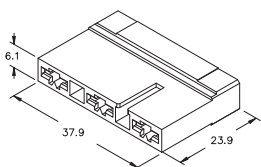
2625010	•				Natural	2
2625030		•				
2625040			•			
2625045			•	Black		

UP STA **UP SEK** Receptacles 6,3
Refrigerator thermostat



2624010	•				Natural	3
2624030		•				
2624040			•			
2624045			•	Black		

UP STA **UP SEK** Receptacles 6,3
Detergent box

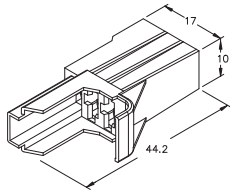


2624210	•				Natural	3
2624230		•				
2624240			•			
2624245			•	Black		

UP STA Receptacles for connector 6,3
Water valve connectors

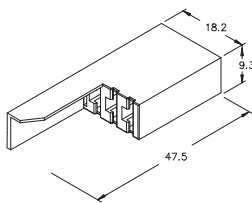
Electrical household appliance connectors

Figure



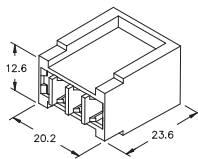
Part number	Polyethylene	PA66 V2	PA66 V0	NO FLAME	Colour	Num. of ways
2624510	•					3
2624530		•			Natural	
2624540			•		Black	
2624545				•	Black	

UP SEK Receptacles 6,3
Water level switch



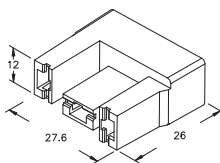
2624610	•					3
2624630		•			Natural	
2624640			•		Black	
2624645				•	Black	

UP TP Receptacles 6,3
Water level switch



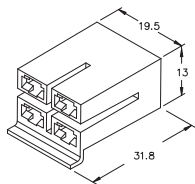
2624810	•					3
2624830		•			Natural	
2624840			•		Black	
2624845				•	Black	

UP STA Receptacles 6,3



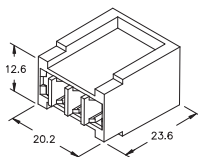
2625110	•					3
2625130		•			Natural	
2625140			•		Black	
2625145				•	Black	

UP STA Receptacles 6,3
Refrigerator thermostat



2624710	•					4
2624730		•			Natural	
2624740			•		Black	
2624745				•	Black	

UP STA Receptacles 6,3
ON/OFF connectors



2624910	•					4
2624930		•			Natural	
2624940			•		Black	
2624945				•	Black	

UP STA Receptacles 6,3